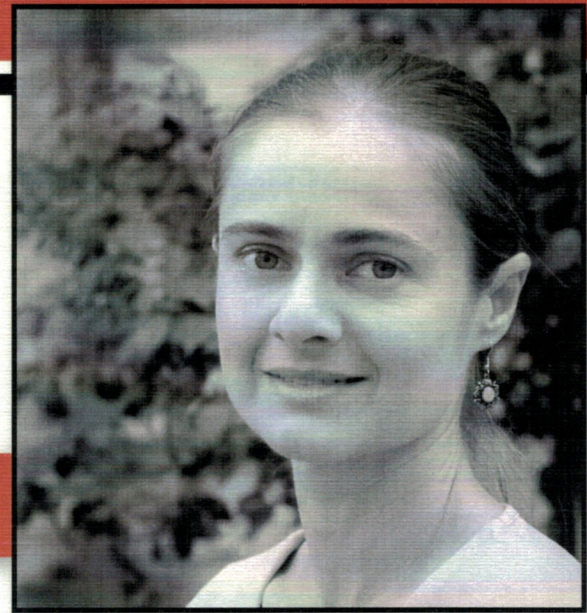


Louisiana Hero of Excellence:

Anna Monhartova, Ph.D.

A's & Aces – New Orleans



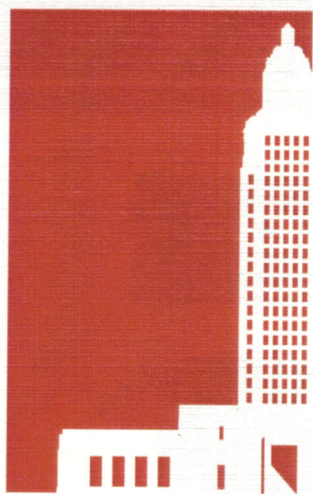
Anna Monhartova, Ph.D, is a 2008 graduate of Tulane University in international development. She has been part of the Tulane faculty teaching international development classes and service-learning for eight years and social innovation and social entrepreneurship since 2014. Her diverse experience includes community engagement, social entrepreneurship, and non-profit leadership and management. In 2015, she became the program director of Social Innovation & Social Entrepreneurship (SISE) at the Tulane University's Phyllis M. Taylor Center for Social Innovation and Design Thinking. Dr. Monhartova has combined education and practice throughout her career, teaching at Tulane University while being actively engaged in community service via a youth development organization.

While still a doctoral student at Tulane in 2008, Dr. Monhartova was motivated to help post-Katrina New Orleans recover and began giving back to a community that had provided her with opportunity. She co-founded a sports-based youth development non-profit organization, A's & Aces, to address the lack of safe, enriching, out-of-school-time activities for New Orleans underserved children. She has been a volunteer ever since, while also guiding the organization as president of the board of directors and teaching full-time at Tulane University. Her social entrepreneurial and non-profit experience with A's & Aces includes guiding the organization since its foundation, being responsible for the overall strategic planning, financial management, monitoring, evaluating, fundraising and grant-writing (contributed to raising over \$1,500,000 in cash and over \$1,000,000 of in-kind resources since 2008). In 2013 the organization was selected by the United States Tennis Association as a National Junior

Tennis & Learning Chapter of the Year (out of 600 plus organizations nationally)

Dr. Monhartova has received numerous awards for her community work, which are:

- Recognition for Community Service and Non-Profit Work
- Millennial Award (2015), Social Entrepreneurship, the Spears Group
- New Orleans Saints Community Quarterback Award (2013)
- St. Elizabeth Guild Volunteer Activist Award (2013)
- Gambit's 40 Under 40 Award (2013)
- City Business Women of the Year Honoree (2011)
- USTA Louisiana Charles Turner Volunteer Service Award (2010)
- Angel Award for volunteer service from the Blue Cross & Blue Shield of Louisiana (2010)
- Tulane T. Sykes Award for the Talented (2010)
- City Council Proclamation (2009)
- USTA Southern Section Educational Merit Award (2008)
- USTA Louisiana Educational Merit Award (2008, 2010)
- Torch Award from Tulane Athletics (2008)
- Clinton Global Initiative University, Outstanding Commitment Award (2008)



LLWCF

LOUISIANA LEGISLATIVE
WOMEN'S CAUCUS FOUNDATION

2016

Women of Excellence Awards & Scholarships Ceremony & Reception

**Tuesday, the Twenty-Fourth of May
Two Thousand and Sixteen
Half past Six O'clock in the Evening**

**Governor's Mansion
1001 Capitol Access Road
Baton Rouge, Louisiana**

SEN. YVONNE COLOMB
Chair, Louisiana Legislative Women's Caucus

SEN. BETH MIZELL
Co-Chair, Women of Excellence

REP. HELENA MORENO
Co-Chair, Women of Excellence